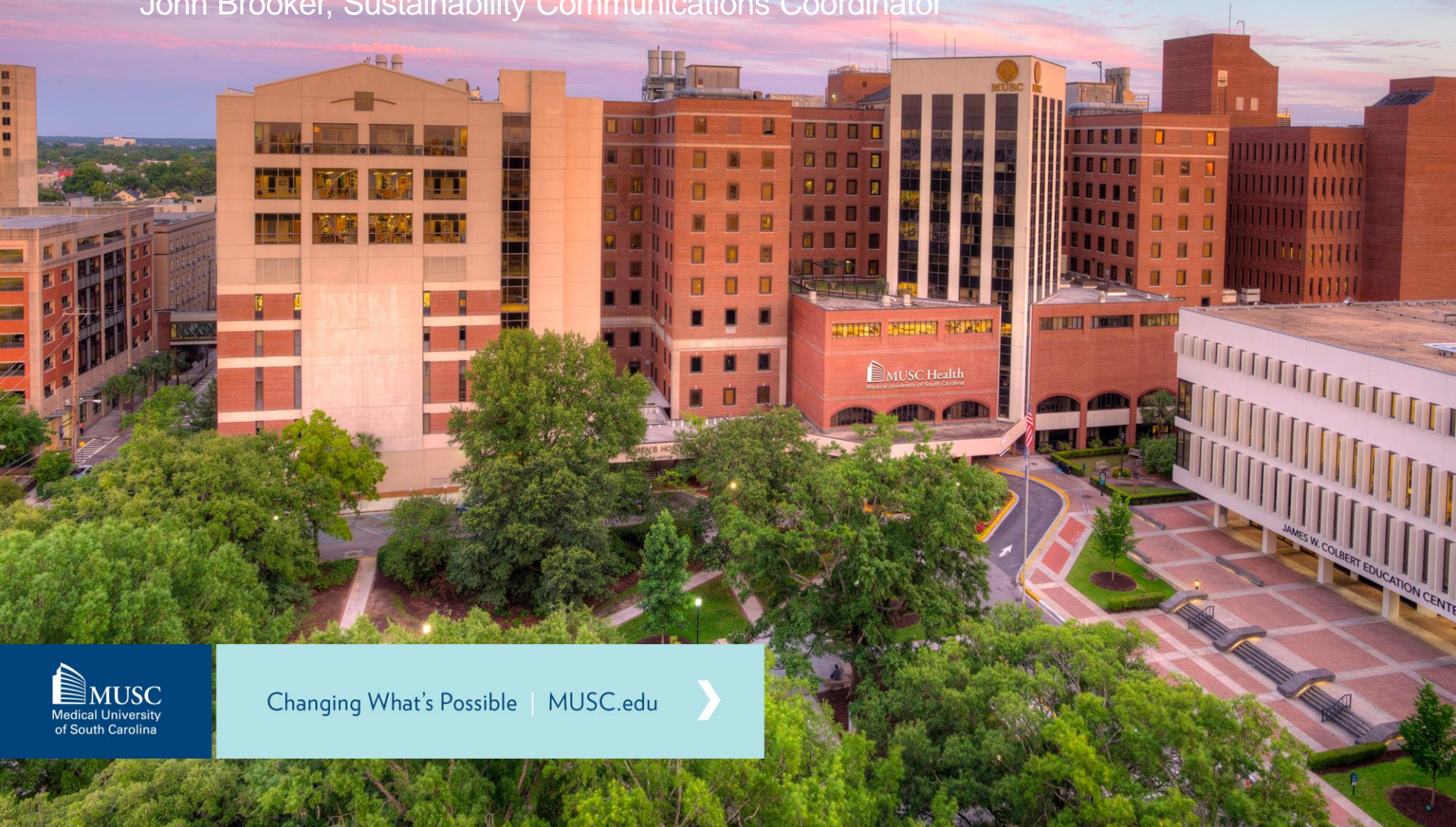


MUSC Sustainability & Recycling

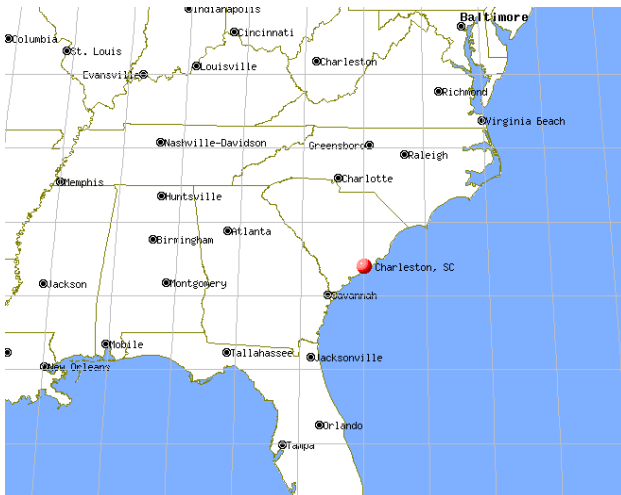
Compost Program Education

John Brooker, Sustainability Communications Coordinator



Medical University of South Carolina (MUSC)

- Public, University-Hospital System located in Charleston, SC
- Approximately 3,000 students and 14,000 employees



Compost Program Launched in January 2018

- Piloted post-consumer compost bins in the Library Lobby and Basic Science Building Floors 1 and 2
- Diverting ~3,000 lbs/month
- Plan to expand to more areas on campus



Education is Key

- Distributed information in our annual recycling guide on composting.
- Backboards
- Compost Banner, Flyer, Table Tent, Pocket Card
- Tabling & Sorting Game
- Compost Report Card
- Educate in-house staff



Unless specified as compostable

Unless specified as compostable



Why Recycle?

The Economy – The recycling industry in SC has a \$13 billion annual impact on the state economy, is responsible for 22,403 jobs, and saves us money on waste disposal here at MUSC.

Human Health – Recycling reduces the need to extract, move, and process raw materials. The pollution associated with these activities has a detrimental impact on human health. Recycling hazardous waste like electronic waste also keeps dangerous chemicals from potentially contaminating water supplies.

The Environment – Recycling reduces greenhouse gas emissions, reduces litter, and pollution.

Proper waste management is essential to building sustainable and healthy communities

Plastic, Glass, Metal

Recycle only hard plastics · Unbroken glass containers · Steel, tin, and aluminum containers and empty, non-hazardous aerosol cans · No plastic bags, or plastic wrap · No Styrofoam, to-go coffee cups, foods or liquids!

Paper

Only dispose of confidential information in secure containers · Magazines, newspapers, and office paper

All paper on campus is shredded

For large amounts call 2-4119 for a cleanout bin

Plastic Bags

Plastic bags are now recyclable on campus! Drop off plastic bags at the new “multi-cycler bin” located in the Colbert Library Lobby

E-Waste, Toner, Batteries

E-Waste

Recycling can take the following items as E-Waste:

Wires/Plugs, CDs, Flashdrives, Discs/Cassettes, Small Radios, Speakers, Computer Mice, LEDs, Cell Phones, and Portable Media Players · *For other state property, contact surplus*

MUHA 6-7000, UNIV 2-3060

Please call 2-4119 for a special collection of any E-Waste listed above containing confidential information · Accumulate E-Waste in a box and call 2-4119 for disposal or drop off your E-Waste at a drop off location: Colbert Library Lobby, Main Hospital by the cafe, and Harborview Lobby

Toner

Toner can be recycled at numerous locations around campus · Call 2-4066 to find a toner box near you · Visit our website to start your own program through Officemax: muscd.edu/gogreen and look under ‘WasteManagement’

Batteries

Call 2-4119 to request a battery bin, once full call 2-4119 for collection · Battery drop off locations: Colbert Library Lobby and Main Hospital by the cafe

E-Waste, Batteries, and Toner collected only on Tuesdays

Cardboard

Please flatten cardboard & paperboard and place next to your trash/landfill bin · Cardboard is baled and recycled separately by housekeeping · Empty glove boxes, paper towel rolls, corrugated and non-corrugated cardboard, clean food boxes (cereal boxes, microwave meal boxes)

Compost

A compost bin is located in the center of the Urban Farm located at 29 1/2 Bee St. · More compost bins are coming to Colbert Library, DDB, BEB, and BSB Lobbies · Compost food scraps, compostable containers, and food-soiled paper · This includes processed foods, fruits, vegetables, meats, eggs, and other cooked foods. No plastic cutlery, to-go coffee cups, or raw meat products · More information at muscd.edu/gogreen

Trash / Landfill

The landfill bin is for items that cannot be recycled or composted · Examples are Styrofoam containers, gloves, and to-go coffee cups (unless specified as compostable)

Contact

Request recycling services through the helpdesk (843) 792-4119

For more information visit muscd.edu/gogreen



**MUSC Sustainability
& Recycling**



www.musc.edu/gogreen

COMPOST

Food Scraps, Compostable Containers,
Paper Products



Specified as Compostable*



ACCEPTED

- Cooked meats
- Dairy products
- Consumable liquids
- Eggs and shells
- Breads, grains, dough
- Fruits and veggies

NOT ACCEPTED

- Raw meat products
- Fats, oils, grease
- Lumber
- Plastic bags



2-4119

GoGreen



COMPOST

Proper waste management is essential to building sustainable and healthy communities. This involves responsibly and efficiently handling our resources from cradle to grave.

► How does it work?



These brown bins are to collect compostable materials.

Composting is nature's way of recycling. Food waste and other organic materials are collected here and taken to Charleston County Compost Facility where they are broken down into compost which can be used to grow more food.

► What goes in the bin?

Food Scraps, Compostable Containers, Paper Products



No Styrofoam, Plastic, or Coffee Cups



Accepted Items: All cooked meats including bones, processed foods, fruits, vegetables, pasta, grains, coffee grounds, coffee filters, dairy products, eggs and shells, wooden skewers, food soiled paper

Items Not Accepted: Raw meat products, plastic items, twist ties, rubber bands, fats oils, grease or non-consumable liquids, wood, metal, glass, or other non-food items

► Why does this matter?



Reduces Waste

Discarded food is the largest source of waste sent to the landfill nationwide*. From a waste audit of Basic Science Building floors 1 and 2 by MUSC Sustainability and Recycling and Rubbermaid Commercial Products, it was found that 27% of the material in the trash could be diverted for composting.

Saves Money

Composting costs less than throwing items away or 'landfilling' our waste. With the cost of trash in the millions each year, anything we can do to divert items from trash can make a huge difference.

Helps Make our Campus Beautiful

In exchange for the materials we send to the county compost facility, MUSC receives finished compost which is used on the MUSC Grounds.

Do you want compost bins at your next event? Email recycle@musc.edu



COMPOST

► How does it work?

These brown bins are to collect compostable materials.

Composting is nature's way of recycling. Food waste and other organic materials are collected here and taken to Charleston County Compost Facility where they are broken down into compost which can be used to grow more food.

► What goes in the bin?

Food Scraps, Compostable Containers, Paper Products



No Styrofoam, Plastic, or Coffee Cups

Accepted Items: All cooked meats including bones, processed foods, fruits, vegetables, pasta, grains, coffee grounds, coffee filters, dairy products, eggs and shells, wooden skewers, food soiled paper

Items Not Accepted: Plastic silverware, most to-go coffee cups, raw meat products, plastic items, twist ties, rubber bands, fats oils, grease or non-consumable liquids, wood, metal, glass, or other non-food items



Questions? Email recycle@musc.edu



What Can Be Composted

Food Scraps, Compostable Containers, Paper Products



All cooked meats including bones, processed foods, fruits, vegetables, pasta, grains, coffee grounds, coffee filters, dairy products, eggs and shells, wooden skewers, food soiled paper

Items Not Accepted

No Styrofoam, Plastic, or Coffee Cups



Raw meat products, plastic items, twist ties, rubber bands, fats oils, grease or non-consumable liquids, wood, metal, glass, or other non-food items

recycle@musc.edu



Changing What's Possible | MUSC.edu





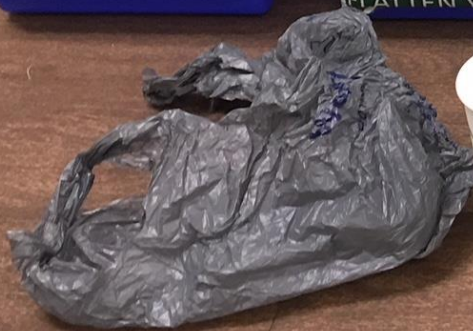
Confidential & Office Paper will be Shredded
PAPER
SYSTEMS
www.buschsystems.com

Cardboard
Cardboard is picked up by MUSC housekeeping
and taken daily/nightly to one of nine cardboard
recycling locations on campus!
FLATTEN YOUR BOX

**PLASTIC
GLASS
METAL**

COMPOST

Landfill
Trash that cannot be recycled





Compost Report Card

NAME

DATE

OVERALL GRADE:

TOTAL COMPOST (lbs.):

CONTAMINATION PERCENTAGE

Major Contaminants Found:

Where Should They Go?

GoGreen

Questions? Email recycle@musc.edu

How much is too much contamination?

Certain items are worse than others:

Examples:

Glass = very bad

Coffee cups aren't as bad as say a whole water bottle

Percent Accepted:
80% or more of bag must be correct

