

Inventorying Bin Infrastructure

Mark Klapatch
Sustainability &
Custodial Supervisor



Fast Facts

- Western WI, 30 minutes from Twin Cities
- 6,110 Students
- 303 acres, 106 buildings on main campus
- 1 satellite location in Hudson and 2 laboratory farms in River Falls

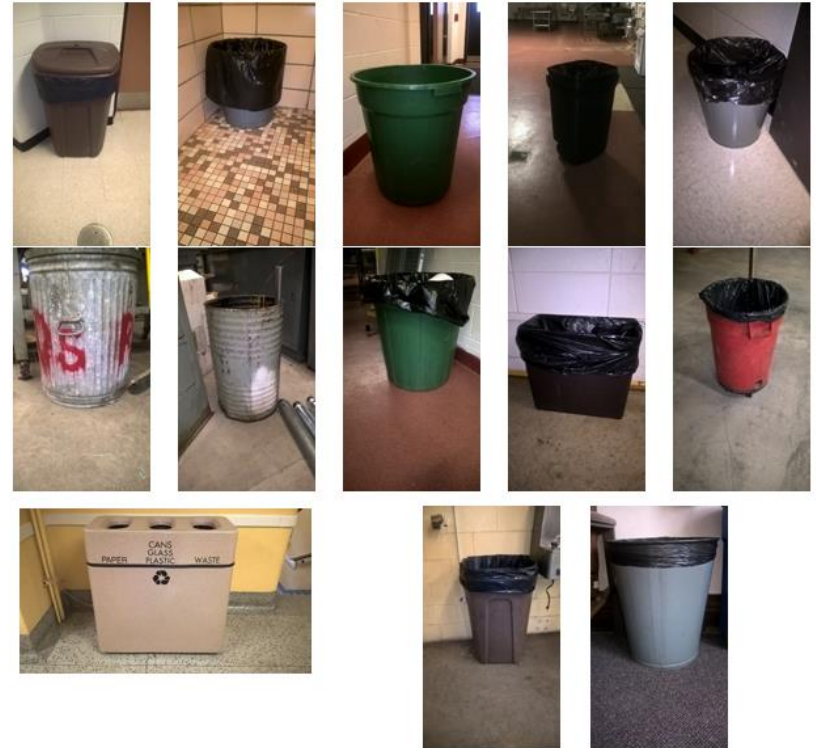


Why Inventory Bins?



How To Conduct A Bin Inventory

- Designate select people
- Coordinate access to areas
 - Communicate to people in those areas
- Document with pictures



Internship Structure

- Conduct Audit of Bins/Signage
- Research Best Practices
- Conduct Campus Survey
- Compare Best Practices and Survey Results
- Make A Proposal

Pilot Projects

- Office Recycling
- Public Areas
 - Removal from Classrooms



Mixed Recycling

- Mixed Paper
- Cardboard
- Plastic Bottles & Containers #s 1-7
- Glass Bottles & Jars
- Food & Beverage Cans
- Food Boxes



Trash For Landfill

- Plastic Bags & Packaging Material
- Styrofoam
- Snack Bags & Wrappers
- Plastic Utensils & Sauce Cups
- Coffee Cups
- Napkins & Paper Towels
- Food & Food-soiled Containers



Contact sustainability@uwrf.edu with questions!



Please visit www.uwrf.edu/sustainability/ for more detailed instructions on item disposal at UWRF.



Contact

mark.Klapatch@uwrf.edu

or

sustainability@uwrf.edu

with questions!

UNIVERSITY OF WISCONSIN

River Falls

OFFICE OF SUSTAINABILITY