

Sorting Shells at UMD



University of Maryland (UMD)

- College Park, Maryland
- 39,803 students
- Students from 50 states and 118 countries
- Flagship university of the state of Maryland
- Established in 1859 as the Maryland Agricultural College

Recycling at UMD



Sustainability Landscape at UMD

Office of Solid Waste & Recycling (aka Terps Recycle)

- Facilities Management, Division of Administration & Finance
- In charge of all campus waste collection, bins, and transportation of waste to recycling and compost facility
- Trash, Recycling (single stream), and Compost available on campus
- Compost collection started in 2011 at Stamp Student Union & dining halls
- 2017 institutional recycling rate: 81%
- 2017 individual recycling rate: 53%



terpsrecycle

Sustainability Landscape at UMD

Office of Sustainability

- Environmental Safety, Sustainability & Risk, Division of Admin & Finance
- In charge of campus Climate Action Plan, Sustainability Fund, green programs
- Reports sustainability data and metrics to the public
- Developed initial artwork and messaging for recycling program with Terps Recycle

Dining Services



- Division of Student Affairs
- In charge of all dining halls and food on campus (except for Co-Op)
- Eliminated disposable carry-out products in the dining halls
- Compost food scraps in back of house

No More Plastic Bags



The University of Maryland can no longer accept plastic bags through our single-stream recycling collection. This change is effective immediately.

Our local recycling facility is no longer accepting plastic bags or film plastic of any kind. Individual bags get tangled in the processing mechanisms at the Material Recovery Facility (MRF).

Reducing your personal waste is always preferable; therefore, always remember to carry reusable bags to avoid plastic bags altogether.

Going forward, you are encouraged to take plastic bags and film plastic to your local grocery store or to the Commons Shop on campus to be recycled. Community drop-off locations can be found by zip code at plasticfilmrecycling.org. Collecting plastic bags and film plastic separately allows for a clean stream of material that can be recycled into many other products.

Videos highlighting the plastic bag problem in MRFs across the country can be found [here](#). If you are interested in the plastic bag recycling process, watch this [video](#).

We are working to update posted recycling signs on campus to reflect this change.

As an additional reminder, small plastic items such as plastic drink lids, straws, creamer cups and plastic cutlery are not recyclable and should be placed in the trash.

If you have any questions, please contact recycle@umd.edu.





RECYCLING

PLEASE NO STYROFOAM



NON-SOILED PAPER

*newspaper, magazines,
paper bags;
place shredded paper
in a plastic bag*



PLASTIC

*#1-7 CLEAN plastic
take-out containers,
cups, bottles, jugs,
trays, film, etc.*



CARDBOARD

*cereal boxes,
frozen food packaging,
clean pizza boxes*



STEEL / TIN

*clean soup, fruit,
tuna, cans, etc.*



ALUMINUM

*cans, containers,
CLEAN foil, pie pans*



CARTONS

*waxed, aseptic
milk cartons,
juice boxes*



PLASTIC BAGS

not accepted



BOOKS

*paperback, textbook,
hardback, phone books,
coll bound documents*



GLASS

jars and bottles

CAMPUS REMINDER:

NO

**food or food
containers in
the recycle bin.**



In our continued effort to ensure high quality recyclables, the Recycling Unit of Facilities Management would like to remind the campus that food, food containers, and liquids are NOT recyclable.

Food containers can only be placed in the recycling if they are COMPLETELY free from food and grease.

If a recyclable food container cannot be cleaned, it should go into the trash bin.



FACILITIES
MANAGEMENT



terpsrecycle



terps **reduce
reuse
recycle**
leave **small** footprints



recyclemania
VIDEO COMPETITION

**WIN IT to
WIN IT**

RECYCLE THIS! VIDEO COMPETITION

Create a 30-second video about recycling, composting or waste reduction.

Grand prize: \$500 in Terrapin Express points

Deadline: Friday, February 28

For more information: recyclemania.umd.edu



facebook.com/terpsrecycle



@terpsrecycle

Facilities
Management



recyclemania
COMPETITION 2015

Defend Our Earth
WASTE LESS. RECYCLE MORE.

RECYCLE THIS! VIDEO COMPETITION

Create a 30-second HD video about recycling, composting or waste reduction.

Grand prize: \$500 in Terrapin Express points

Deadline: Friday, March 13

For more information: recyclemania.umd.edu



facebook.com/terpsrecycle



@terpsrecycle



umdmaterpsrecycle



terpsrecycle



**YOU
RECYCLE
WE WIN**

Now through the end of March

recyclemania.umd.edu

Facilities
Management



**BE FEARLESS.
WASTE LESS.**

RECYCLE THIS! VIDEO COMPETITION

Create a 30-second HD video about recycling, composting or waste reduction.

Grand prize: \$500 in Terrapin Express points

Deadline: Friday, March 13

For more information: recyclemania.umd.edu



facebook.com/terpsrecycle



@terpsrecycle



umdmaterpsrecycle



terpsrecycle



**Clean the Stream
In 2016**
TERPS RECYCLE RIGHT

These items CANNOT be recycled

**NO PLASTIC
BAGS**
(Deposit in campus convenience boxes)



**NO SMALL
PLASTICS**
(Less than 2 inches; should be crushed)



RECYCLE THIS! VIDEO COMPETITION

Create a 30-second HD video about recycling, composting or waste reduction.

Grand prize: \$500 in Terrapin Express points & video shown at a 2016 Terrapin Express event

Deadline: Sunday, March 13

For more information: recyclemania.umd.edu



recyclemania
competition 2016



@terpsrecycle

RecycleMania 2016

Clean the Stream



DO NOT PUT PLASTICS THAT
ARE LESS THAN 2 INCHES ON
ANY SIDE IN RECYCLING BINS.

TERPS RECYCLE RIGHT

RECYCLE THIS! VIDEO COMPETITION

Create a 30-second HD video about recycling,
composting or waste reduction.

Grand prize: \$500 in Terrapin Express Points
& Video Shown at a 2017 Basketball Game

Deadline: Sunday, March 13

For more information:
recyclemania.umd.edu



    @TerpsRecycle



RecycleMania 2016

Clean the Stream

TERPS WE CYCLE
RECYCLE
RIGHT



**DO NOT PUT
STYROFOAM IN
RECYCLING BINS**



**DO NOT PUT
PLASTIC BAGS IN
RECYCLING BINS**

Plastic bag recycling is
available in campus
convenient stores

RecycleMania 2016

Clean the Stream

TERPS WE CYCLE
RECYCLE
RIGHT



**DO NOT PUT PLASTICS
THAT ARE LESS THAN
2 INCHES ON ANY SIDE
IN RECYCLING BINS**



**DO NOT PUT FOOD
OR LIQUIDS IN
RECYCLING BINS**
Compost these
when possible

UMD STUDENTS ARE
REDUCING AND REUSING
TO BRING THEIR WASTE FULL CIRCLE



VEGETABLES ARE
SERVED AT **UMD**
DINING HALLS

TERPS TOSS
FOOD SCRAPS



COUNTY
COMPOSTS
THE SCRAPS

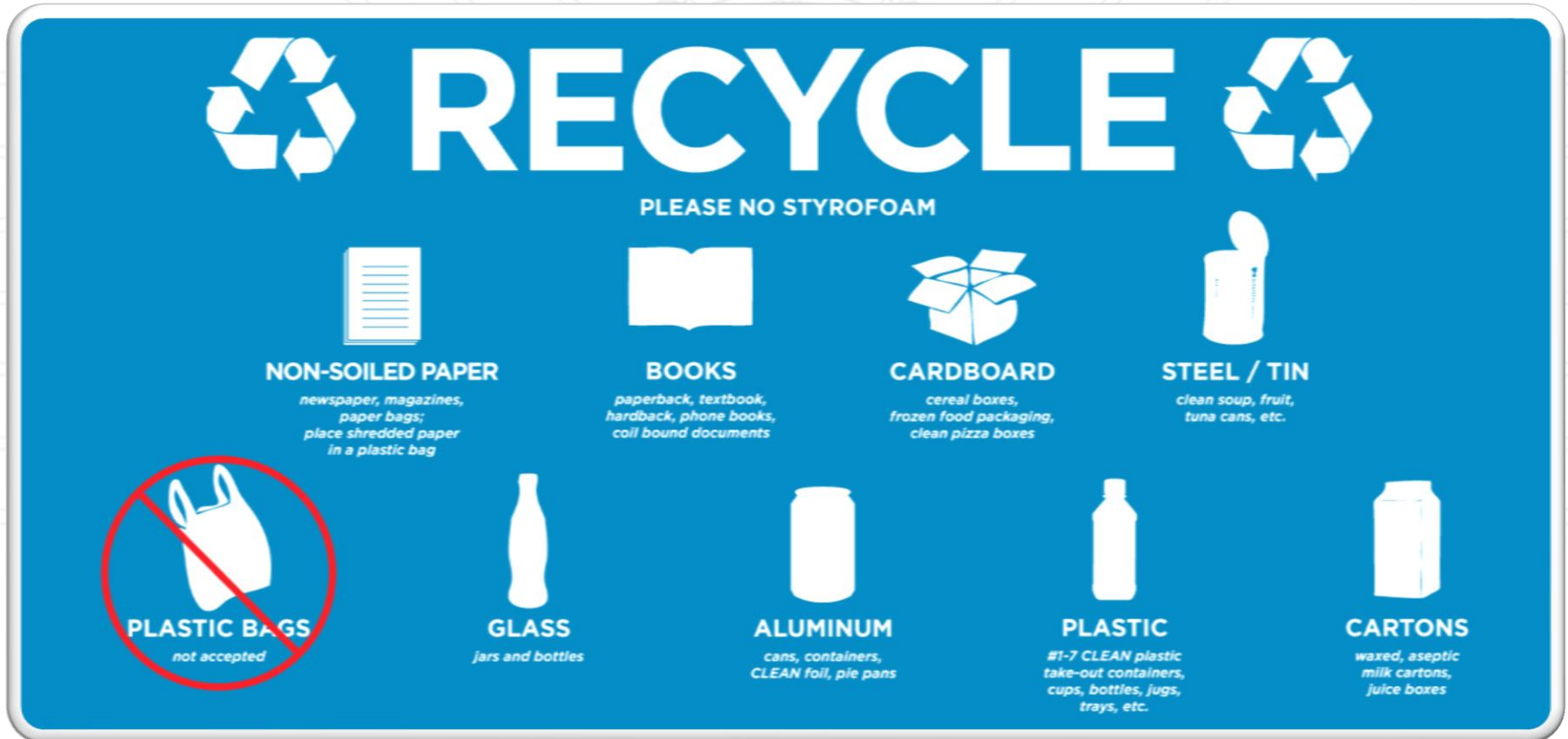


TERP FARM USES
THE COMPOST TO
GROW VEGETABLES



#UMDinspires

Recycling



Compost and Trash





RECYCLE



YES ✓



**MIXED PAPER
& CARDBOARD**



**PLASTIC
CONTAINERS**



METAL CANS

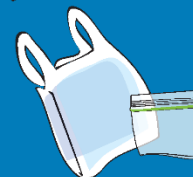


GLASS BOTTLES

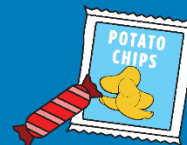
NO ✗



FOODS & LIQUIDS



PLASTIC BAGS



**PACKETS &
WRAPPERS**



SMALL PLASTICS



**CERAMICS &
DISHWARE**



OFFICE SUPPLIES

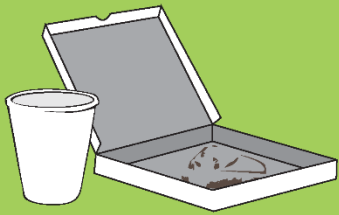
recycle@umd.edu



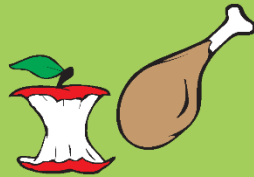
COMPOST



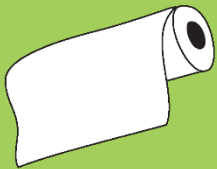
YES ✓



PAPER
CONTAINERS



FOOD SCRAPS

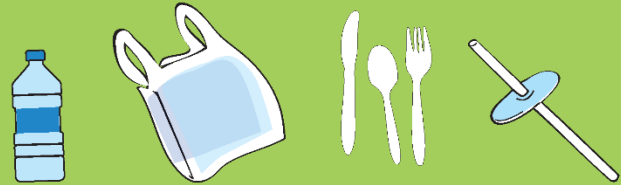


PAPER TOWELS



TEA & COFFEE

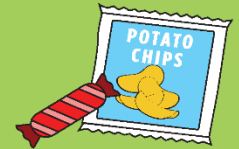
NO ✗



PLASTICS



CLOTHING



PACKETS &
WRAPPERS



GLASS



METALS

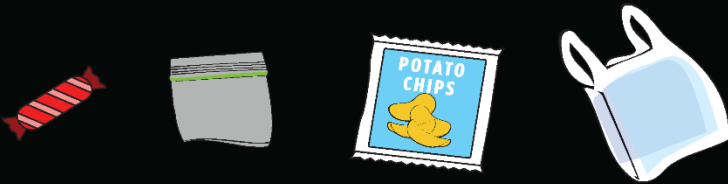
recycle@umd.edu



LANDFILL



YES ✓



PACKETS & WRAPPERS



SMALL PLASTICS



STYROFOAM

NO ✗



BOTTLES & CANS



**MIXED PAPER
& CARDBOARD**



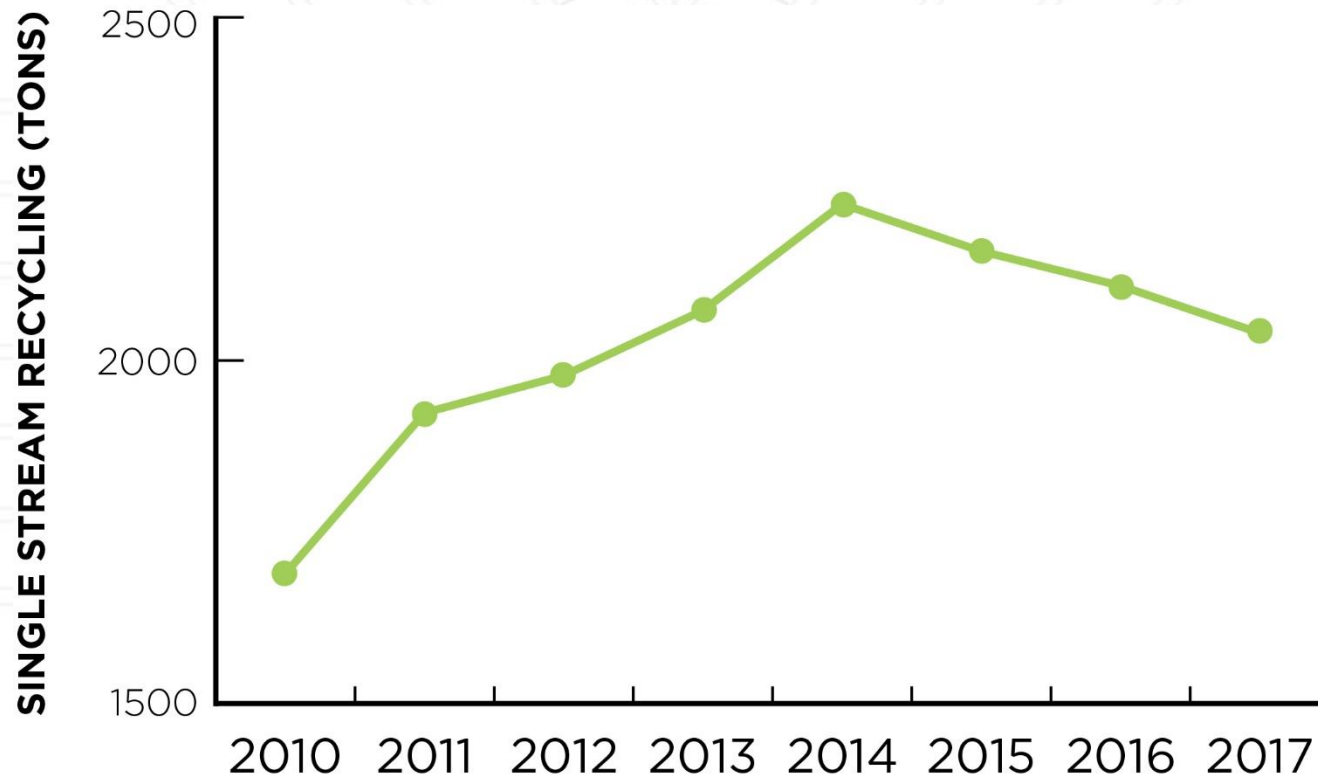
FOOD SCRAPS



PAPER TOWELS

recycle@umd.edu

Single Stream Disposal Data



Single Stream Disposal Data

Once we have focused our program on quality instead of quantity, our overall volume of material collected has decreased. This has occurred from a couple of factors:

- Campus community more educated about what *not* to place in the recycling bins --> fewer incorrect items in the bin --> decreased material
- We are working with housekeeping teams to ensure recycling bags that are heavily contaminated are being sent to the landfill instead of the recycling facility.

Connect

Email: sustainability@umd.edu
recycle@umd.edu

Social Media: @SustainableUMD @TerpsRecycle



THANK YOU!!

sustainability.umd.edu
terpsrecycle.umd.edu

terps leave **small** footprints