

WHO WE ARE



BENTLEY
UNIVERSITY



CAMPUS DESCRIPTION



BENTLEY
UNIVERSITY

- 38 buildings
 - 24 Residential buildings
- 1.8 million sq. ft.
- 160 Acres
- Built 1960 – 2016



OUR PROGRAM



BENTLEY
UNIVERSITY





W H Y ?

WHY?



BENTLEY
UNIVERSITY

Bentley University
175 Forest Street
Waltham, MA 02452

Month: MAY

Daily Trash Tonnage Report

<u>Date</u>	<u>Total Tons</u>
5-1	4.48
5-3	7.65
5-4	4.70
5-5	3.62
5-6	6.57
5-7	4.75
5-8	4.90
5-10	3.92
5-11	3.25
5-12	2.62
5-13	3.11
5-14	2.24
5-15	2.08
5-17	1.96
5-18	1.88

<u>Date</u>	<u>Total Tons</u>
5-19	1.66
5-20	1.90
5-21	1.72
5-22	1.81
5-24	1.30
5-25	1.17
5-26	1.01
5-27	1.18
5-28	1.04
5-29	—
5-31	—

Total Monthly Tons: 70.52

WHY?



BENTLEY
UNIVERSITY



WHY?



BENTLEY
UNIVERSITY



PHOTO: BLEND IMAGES/JOHN LUND/GETTY

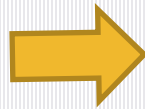
WHO?



BENTLEY
UNIVERSITY

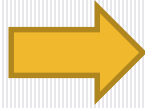


OR





BENTLEY
UNIVERSITY



RECYCLING SYSTEM NOW



BENTLEY
UNIVERSITY



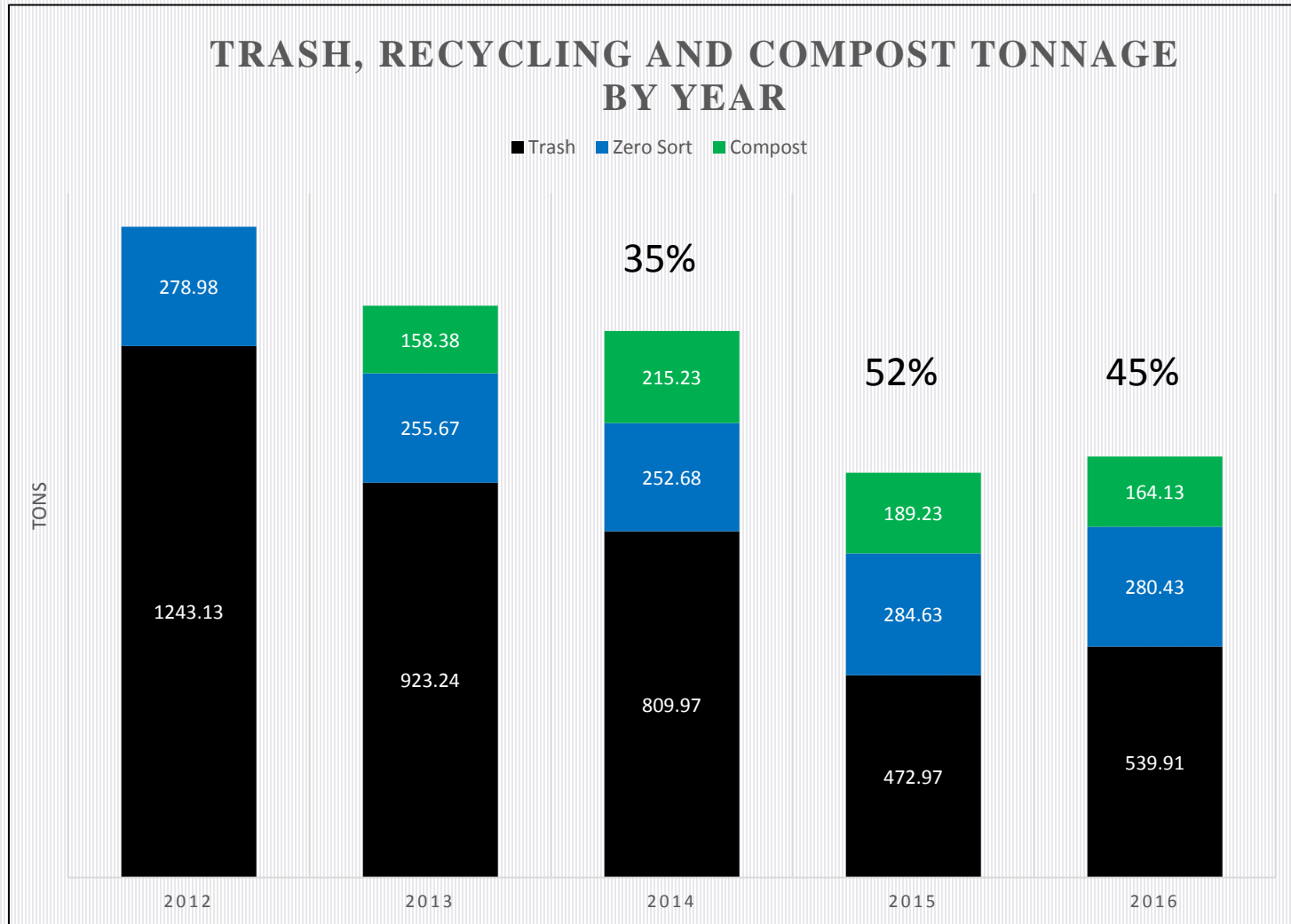
ABOUT THE RFP PROCESS



BENTLEY
UNIVERSITY

- Committed to helping us achieve a 50% waste diversion by 2017 and Zero waste by 2025.
- Take over the recycling program
- Take over the Compost program and improve it.
- Help at Move-in and Move-out
- Measurement and Reporting
- Process for continuous improvement
- Carbon footprint and impact reporting

RESULTS





NEW ROBUST COMPOST PROGRAM



BENTLEY
UNIVERSITY



MOVE THE COMPACTORS



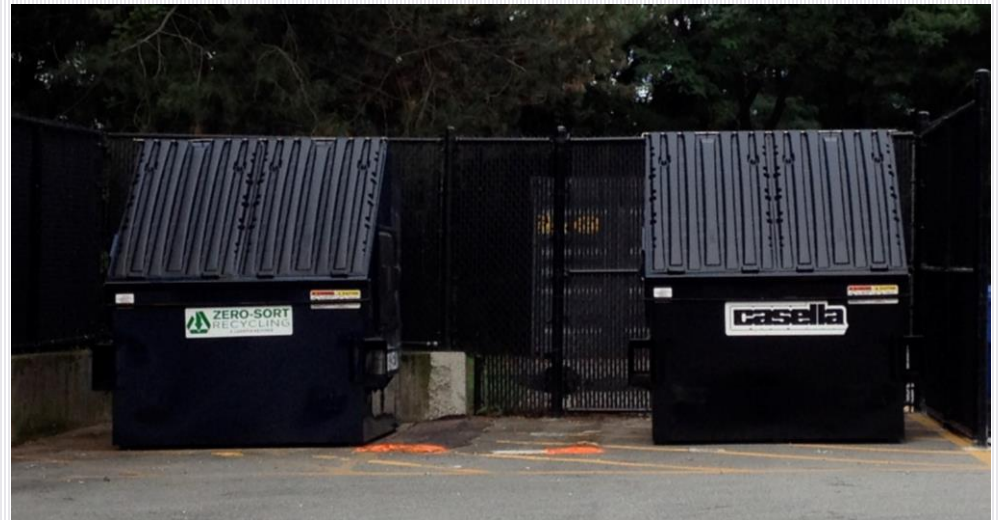
BENTLEY
UNIVERSITY



INFRASTRUCTURE WORK



BENTLEY
UNIVERSITY



TWEAK PICK UPS



BENTLEY
UNIVERSITY



REPRESENTATIVE FROM COMPANY HELPING WITH STRATEGY



BENTLEY
UNIVERSITY



DID WE SAVE?



BENTLEY
UNIVERSITY



OLD PROGRAM EXPENSES



BENTLEY
UNIVERSITY

Item	Cost
Hauling	\$383,380
Recycling truck maintenance and fuel	\$10,000
Recycler at 40 hrs per week	\$100,000
Recycler at 6 hrs overtime per week (8 months)	\$7,000
Total	\$500,380

NEW PROGRAM EXPENSES



BENTLEY
UNIVERSITY

Item	Cost
Hauling, compost, recycling and trash	\$330,896
Recycling truck maintenance and fuel	\$10,000
Recycler at 40 hrs per week	\$100,000
Recycler at 6 hrs overtime per week (8 months)	\$7,000
Total	\$330,896

Year 1 savings: ~\$170,000

PERFORMANCE YEAR OVER YEAR



BENTLEY
UNIVERSITY

2014 (previous Contract)	2015	2016
Total Spend \$500,380	Savings of \$53,000 over previous contract	Savings of \$74,000 over previous contract even with escalator.
Diversion rate of 35%	Operational savings of not paying union staff overtime or running the truck.	Union staff retired and is no longer on the payroll.
	Diversion rate of 52%	Diversion rate of 45%

QUESTIONS?



BENTLEY
UNIVERSITY



Natalie Berland
Assistant Director of Sustainability
Contact: nberland@Bentley.edu