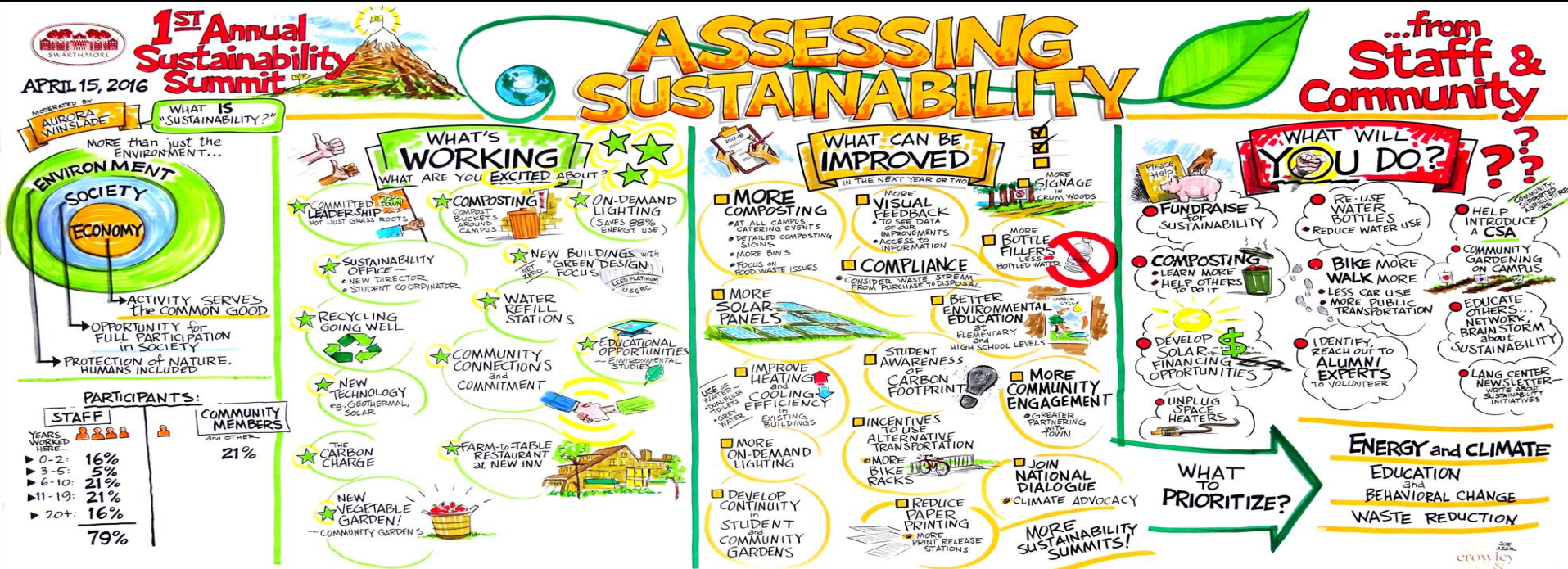
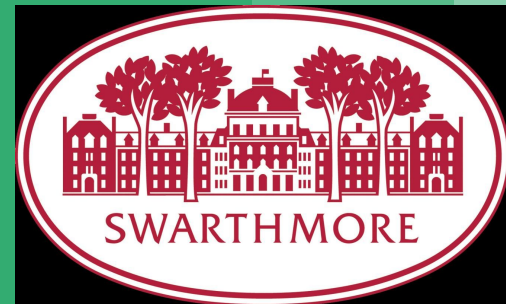
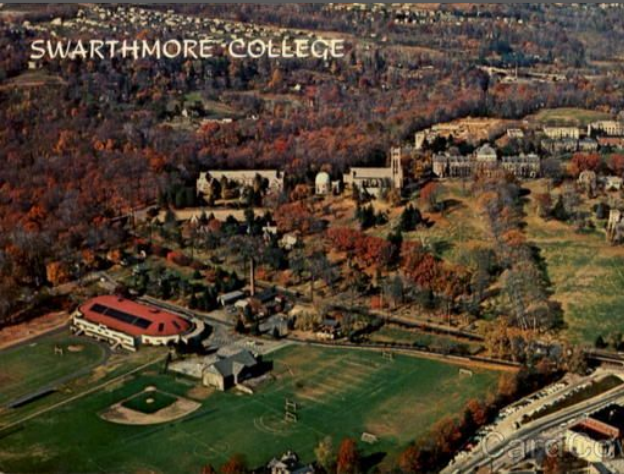


# Waste Assessment at Swarthmore College



# Swarthmore College

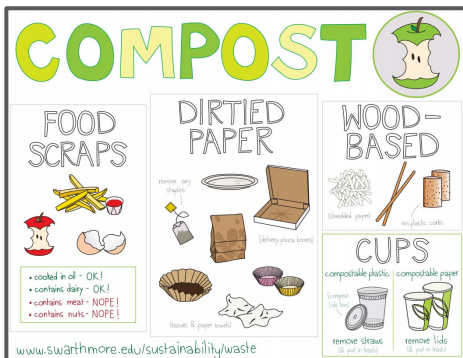
- 1500 students, residential, liberal arts
- Quaker roots, highly selective
- Large endowment, small facilities team
- 200 acres of woods
- No [reliable] waste metrics



# Swarthmore Students Lead the Way on Waste

Green Advisors (23 students) manage the campus composting system (started by a student club)

Student created our waste signage



# Swarthmore Students Lead the Way on Waste

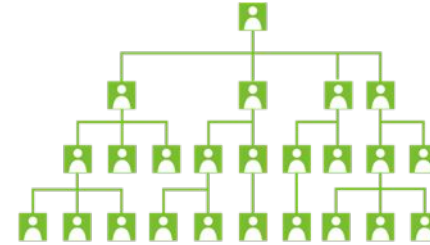
## Presidential Sustainability Research Fellowship:

- Academic Year Program: 2 semesters of classes & paid internship
- Faculty and staff mentors
- Students gain project management, business, and leadership skills
- Campus advances sustainability goals
- Extended community of students, mentors, and advisors **builds campus-wide buy-in and enthusiasm**

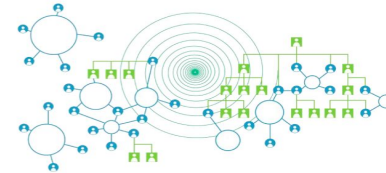
# Redesigned Sustainability & Climate Governance Structure

Students  
integrated  
into campus  
sustainability  
decision making

**Executive  
Committee**  
(senior staff)



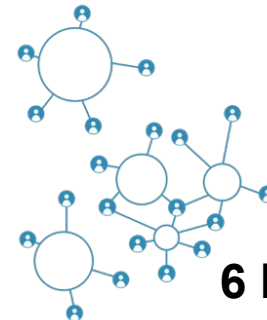
**Committees**  
Woods, Carbon,  
Sustainability



**4 Fellows**

**Working Groups**

**Waste**, Assessment, Behavior  
Change



**6 Fellows**

## 2 Presidential Waste Fellows

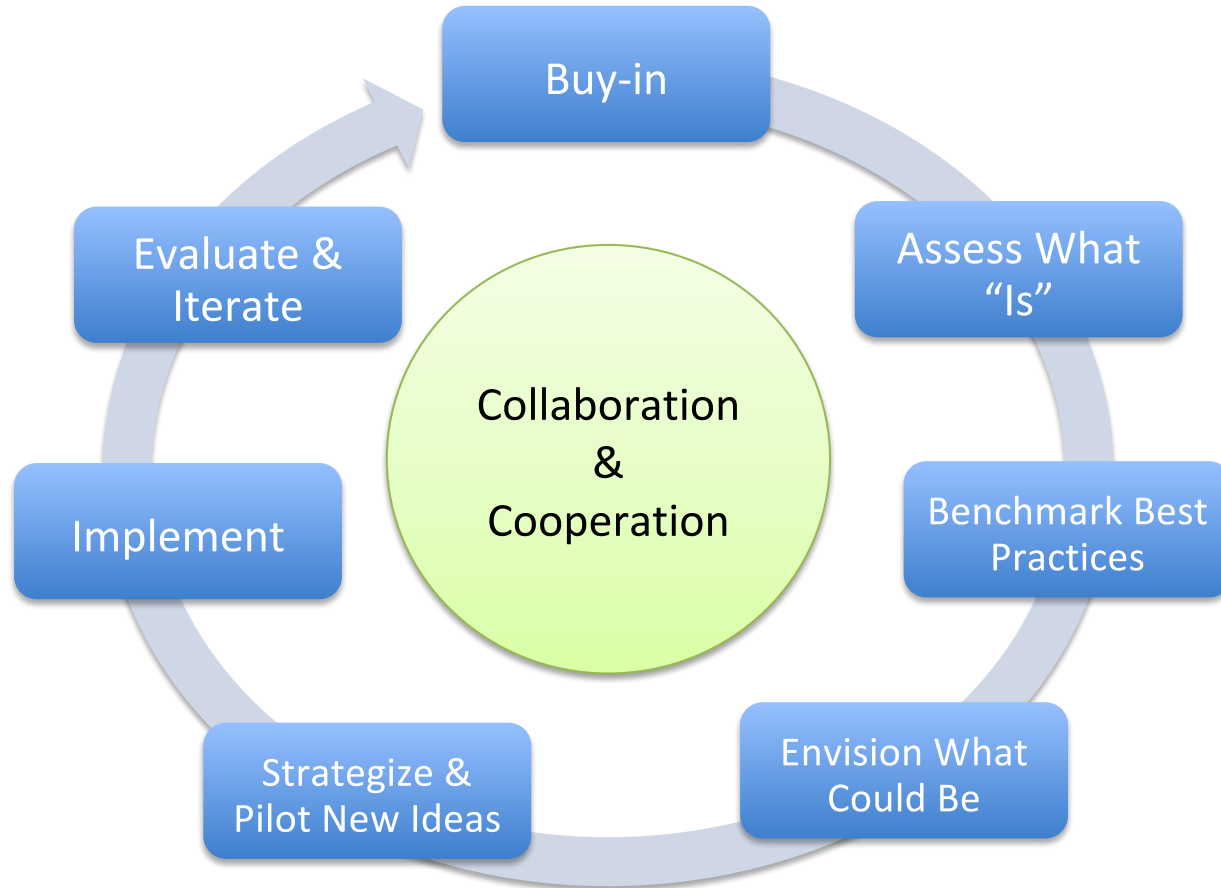
- Local consulting firm iSpring is guiding us and assisting students with project design (and some implementation)
- Working Group:
  - Director of Custodial (to be hired)
  - VP Facilities
  - Director of Sustainability
  - Director of Grounds
  - Custodial Supervisors



# Presidential Waste Reduction Fellows



# Waste Assessment

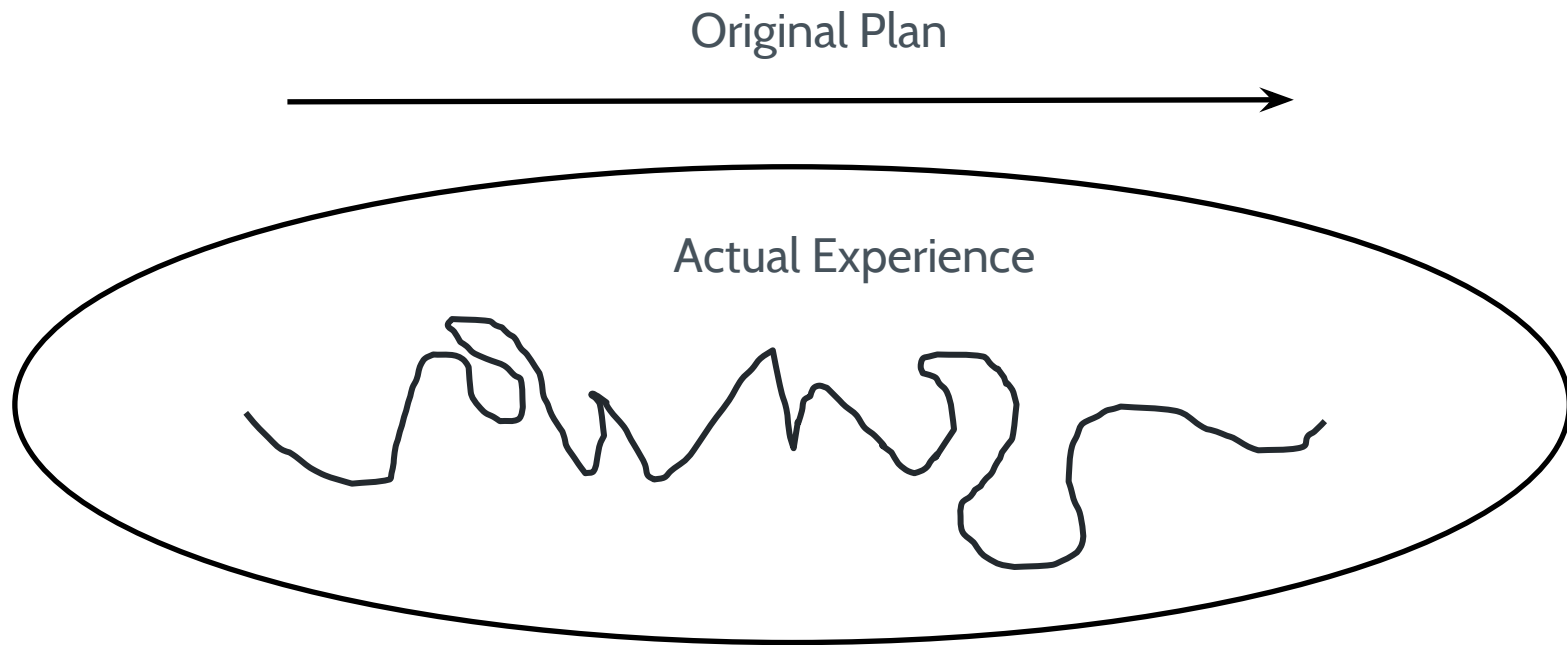


# Disconnect Between the Official Story of How Something New Get Achieved and the Actual Story

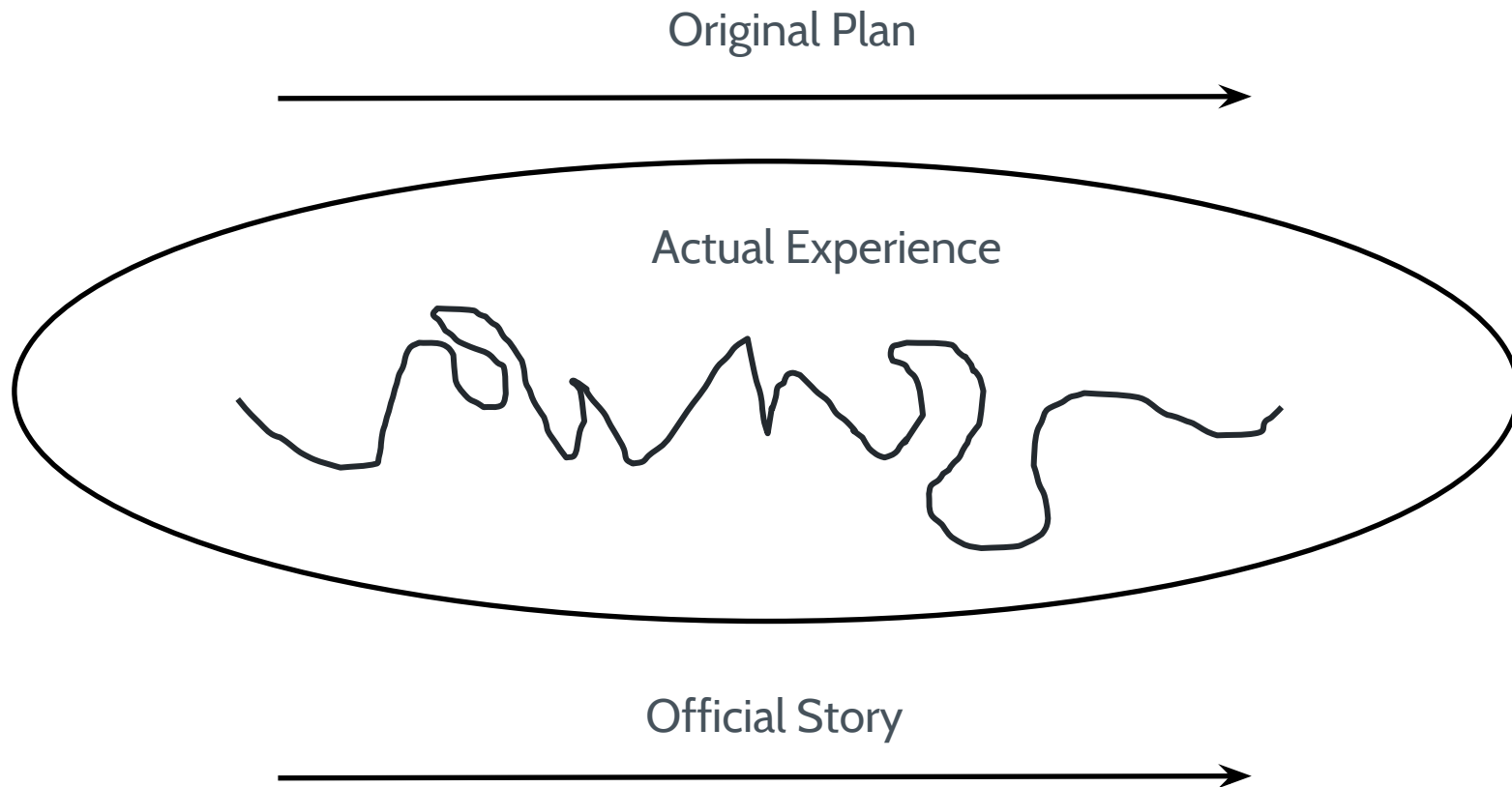
Original Plan



# Disconnect Between the Official Story of How Something New Get Achieved and the Actual Story



# Disconnect Between the Official Story of How Something New Get Achieved and the Actual Story



# Getting Buy-In

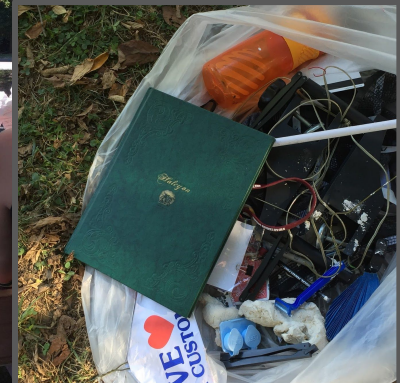
- VP Facilities (agreed to fund \$15k for consultants)
- VP Finance
- Head of Grounds
- Custodial Supervisors
- Faculty

# Assess “What-Is”

- Interviews
  - Grounds
  - Dining
  - Custodial
  - Maintenance
- Failed Spy Mission (attempt to record waste hauler’s activities)
  - → Met with waste hauler (and apology)
- Waste assessment - 5 Buildings, 2 days
  - → Coordination with Facilities and Custodial Staff
  - → Faculty, Staff, Alumni, Student, & Board Volunteers!

# Assess “What-Is”

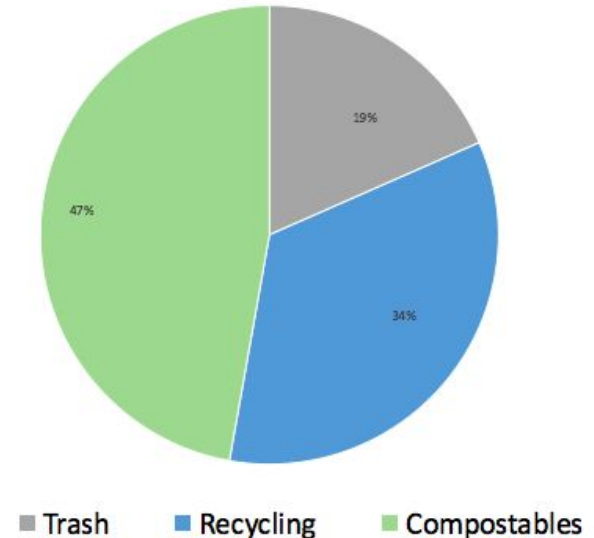
- With 35 volunteers, we sorted through **1680 pounds of waste!**



# Assess “What-Is”

- With 35 volunteers, we sorted through **1680 pounds of waste!**
- Findings:
  - About 32% of waste is diverted (sort of)
  - 81% of waste *could* be diverted
  - 20 pounds of pizza boxes

Waste Breakdown at Swarthmore



# Benchmark Best Practices

- Literature Review
- Visit to other campuses (Macalaster)
- Interviews with other campuses
- Attend CURC workshop at AASHE

# Vision statement as of Oct 7th

Big Picture Planning  
Vision statement  
Principles  
Outcomes  
Actions

# Vision Statement (draft)

We will engage the Swarthmore community in understanding more deeply how we connect to our waste streams as we dramatically increase diversion of compostable and recyclable waste in order to become a “**Zero Waste campus**” (defined as 90% diversion of waste)...



...In the process, we will facilitate a **stronger and more collaborative** relationship between the **student body and staff**, especially custodial services...



...At the same time, we will model for the world of higher education a more compelling approach to zero waste (defined as continual mitigation of waste production at source) by **challenging consumerism and overproduction** in how we behave at the College and interact with the larger world.

