

# 2003-2014: Tennessee State University Campus- Community Recycling Project

Partners: Nashville Office of Public Works, TSU Facilities Management Office, TSU Office of Student Affairs, Hadley Park Neighborhood Association, Jefferson Street United Merchants Partnership (JUMP), African American Cultural Alliance (AACAA), EarthMatters Tennessee, TSU Gateway 2 Heritage Student Organization, Tennessee Department of Environment and Conservation (TDEC)

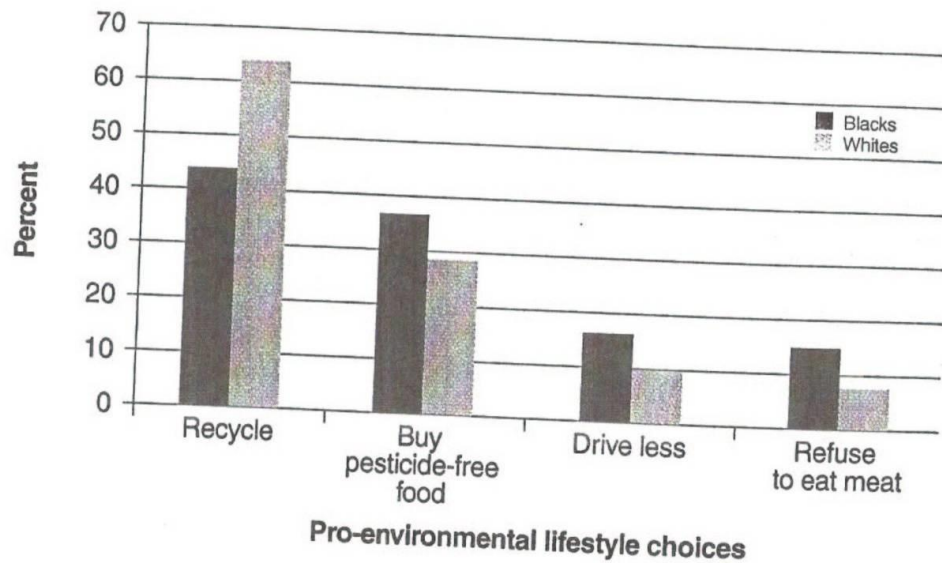
Courses: Cartography (GEOG 3100), Urban Geography (GEOG 4850)

Students: Urban Studies, Biology, Engineering, Political Science, Mathematics

Funding: National Wildlife Federation, U.S. Department of Energy



**Figure 2. Respondents who “often” or “always” make pro-environmental lifestyle choices**

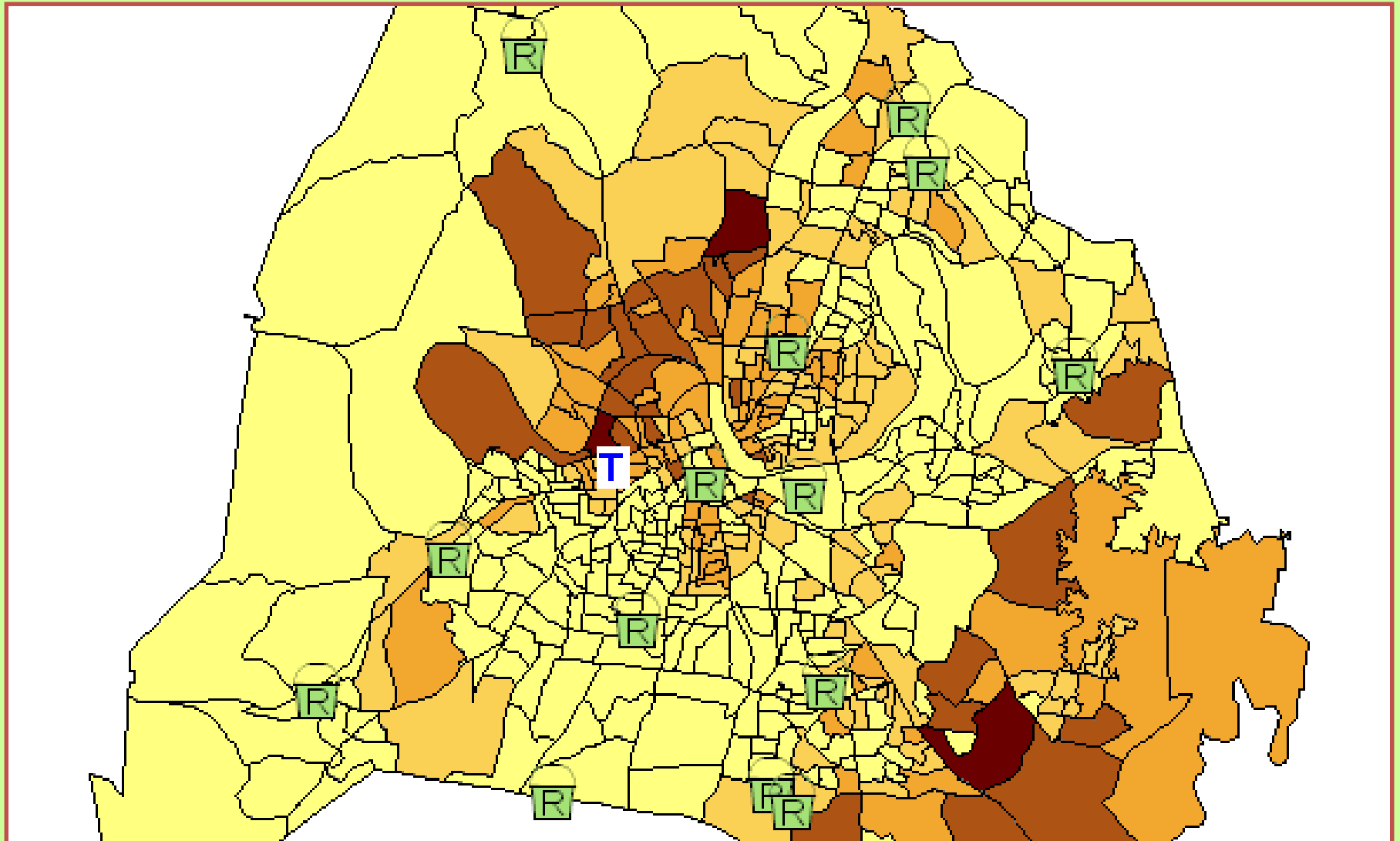


NOTE: The 1993 sample above is based on responses from 179 blacks and 1,347 whites.

SOURCE: 1993 General Social Survey. National Opinion Research Center, *General Social Surveys, 1972-2002* (Chicago: University of Chicago Press, 2002).

Source: Mohai, Paul. “Dispelling Old Myths: African American Concern for the Environment.” Environment Journal. Vol. 45, No. 5 (June 2003): 11-26.

**Locations of Metro Recycling Centers in Proximity to Tennessee State University's Main Campus and Nashville/Davidson County's Black Population - 2004**



# 2004 – The Tennessee State University **Campus/Community Recycling Pilot Project** gets seed funding via the National Wildlife Federation Campus Ecology Fellowship

fellowships - Campus Ecology - National Wildlife Federation - Microsoft Internet Explorer provided by Tennessee State Universit

http://www.nwf.org/campusEcology/resources/HTML/2004fellows.cfm

Google



Go

Bookmarks 10 blocked Check Look for Map AutoFill Settings lenovo

Home Page Tools



Inspiring Americans to protect wildlife for our children's future

Search  Go



Home About Wildlife Global Warming Outside in Nature Magazines Shop **Donate Now**

National Wildlife Federation®  
**CAMPUS ecology™**



Campus Ecology Home My Involvement My Campus Involvement Resources News

## fellowships

### 2004 Fellows

*(Grant Period: February 2004 - December 2004)*

National Wildlife Federation's (NWF) 2004 Campus Ecology fellows are building upon the efforts of 50 alumni fellows from 24 states across the country. With projects ranging from composting to green roofs and biodiesel to reuse and recycling, the fellows are partnering with campus and community members to advance initiatives toward a sustainable future.

In spirit of the National Wildlife Federation's continued commitment to fostering youth leadership within NWF and among our **Affiliate organizations**, the fellows are participating in a training hosted in conjunction with NWF's 2004 Annual Meeting in St. Louis, MO. The training

Sign Up for campus e-news

Chill Out™

Campus Solutions to Global Warming

Alerts

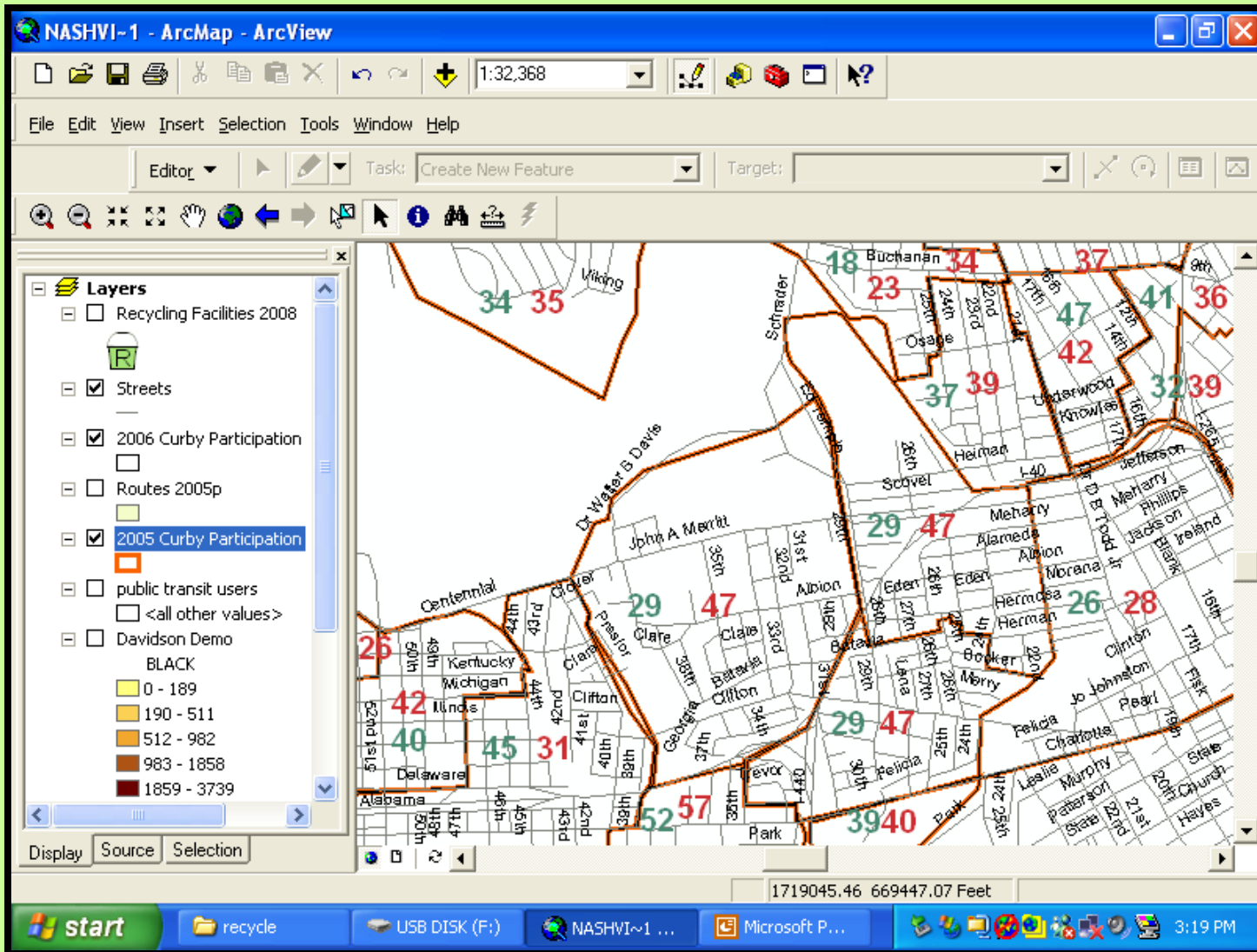
- > Guide to Climate Action Planning
- > Take the POWER VOTE Pledge
- > Oct 23 - Web Conference on Climate

Internet | Protected Mode: On 100%

3 Internet Explorer Extra Service Projects Microsoft PowerPoi... 98% 2:18 PM

# Campus-Community Recycling Pilot Project

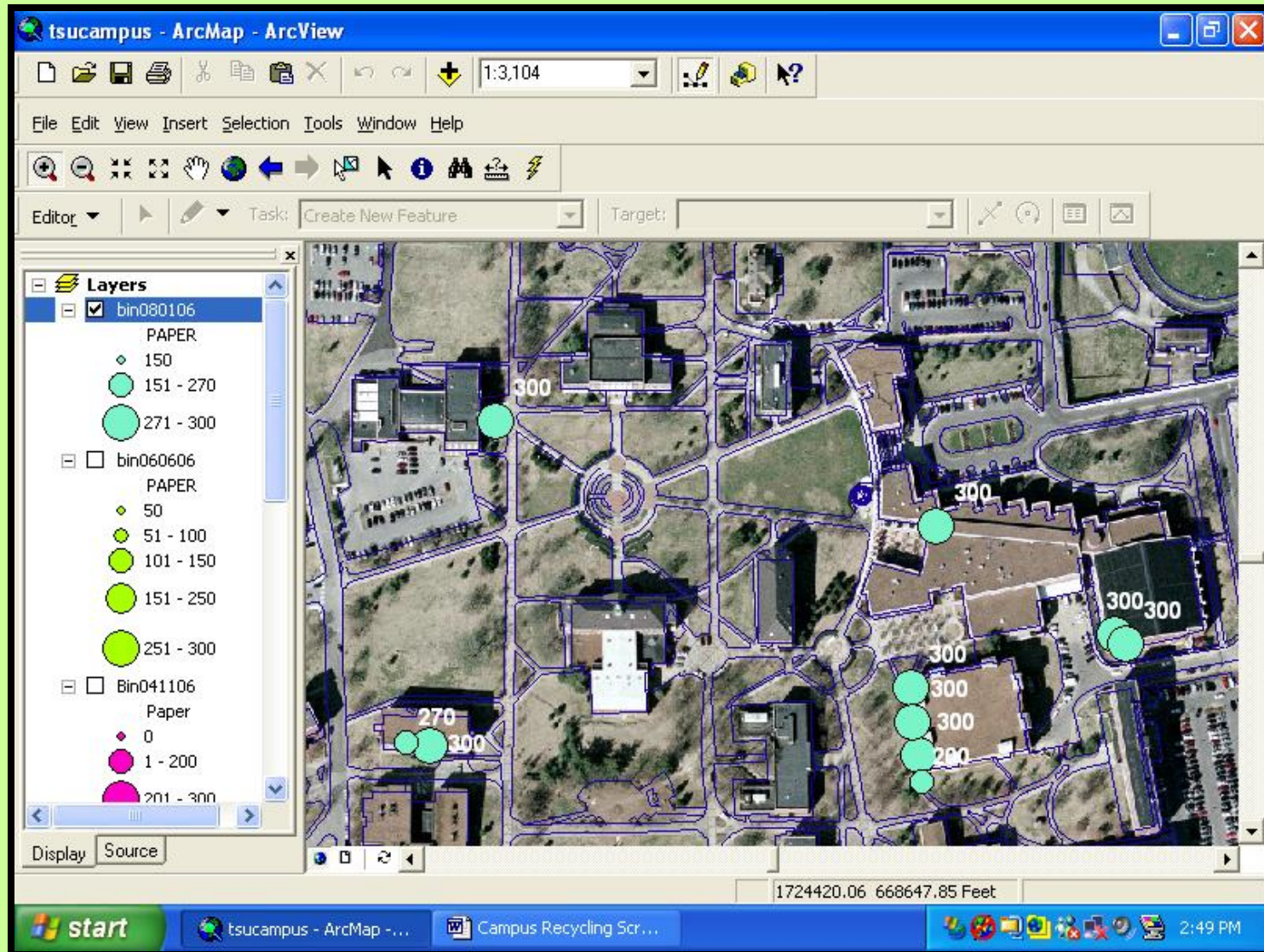
## GIS and GPS Mapping of Nashville Curbside Recycling Program Participation Rates by Neighborhood: 2005-2006





# Campus-Community Recycling Pilot Project

## GIS and GPS Mapping of Bin Locations with Pounds of Recyclable Material Collected - Summer 2006



# Institutional “Buy-In” Fall 2007

## TSU Campus-Community Recycling Committee





# Community Information Meetings

## January 2008





# TSU Campus-Community Recycling Center Site – Opens

April 22<sup>nd</sup> 2008 (Earth Day)

The recycling center is monitored by TSU Police and Facilities Management and emptied by the Nashville Office of Public Works.

TSU student environmental and other service organizations are working with TSU Facilities Management to move campus recyclable materials to the drop-off site.

Proceeds from the recyclables are used to fund “green scholarships” at TSU.

Grants funds are being pursued to support a campus-community environmental education initiative with the African American Cultural Alliance as community partner.



# June 2011: TSU Campus-Community Recycling Center Downsized then Shut Down

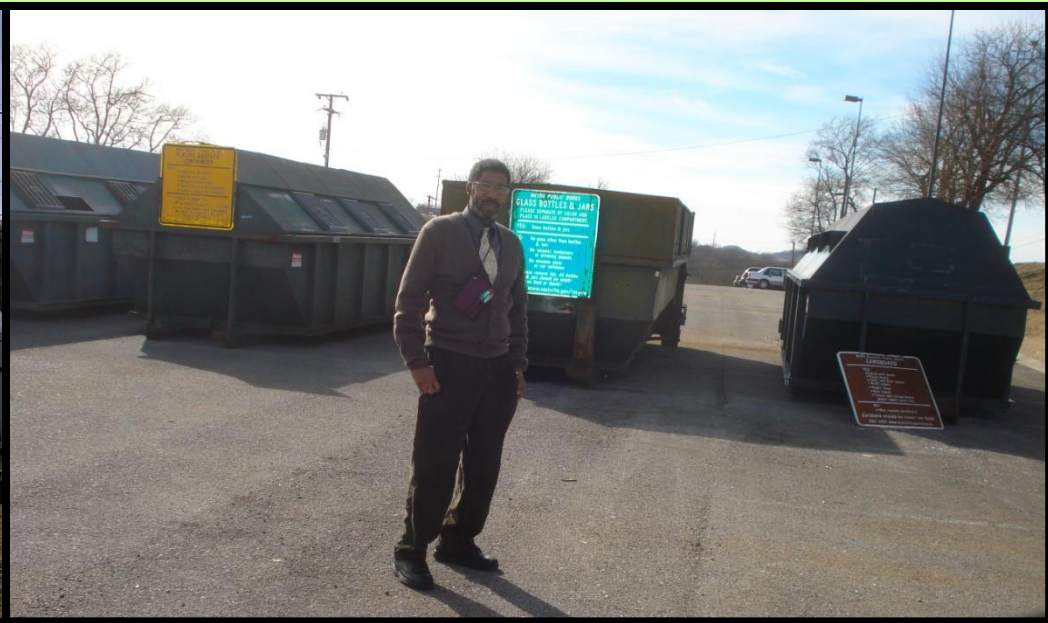


# Spring 2013: TSU Facilities Management Places and Maintains Recycling Receptacles throughout the Campus





# February 2014: Campus-Community Recycling Center Re-Opened at TSU!



# Potential for Future Research on Community and Campus Recycling using GIS

- Mapping the spatial distribution of Nashville's recycling facilities and local demographics
- Mapping participation in the "Curby" recycling program by race and income
- Mapping the locations of TSU's recycling receptacles



# Geographic Information Sciences Laboratory



Box 9538

Tennessee State University  
3500 John Merritt Boulevard  
Nashville, Tennessee 37209

615-963-5508

[dpadgett@tnstate.edu](mailto:dpadgett@tnstate.edu)